

# PRESTON HOLLOW PEOPLE

OCTOBER 2016 | Vol. 12, No. 10 | prestonhollowpeople.com | [f](#) [p](#) phollowpeople | 214-739-2244

## Mystery Shrouds Lawyer's Death After Homicide Ruling

**NEW DEVELOPMENT REVEALS BLUNT FORCE TRAUMA BEFORE FIRE**

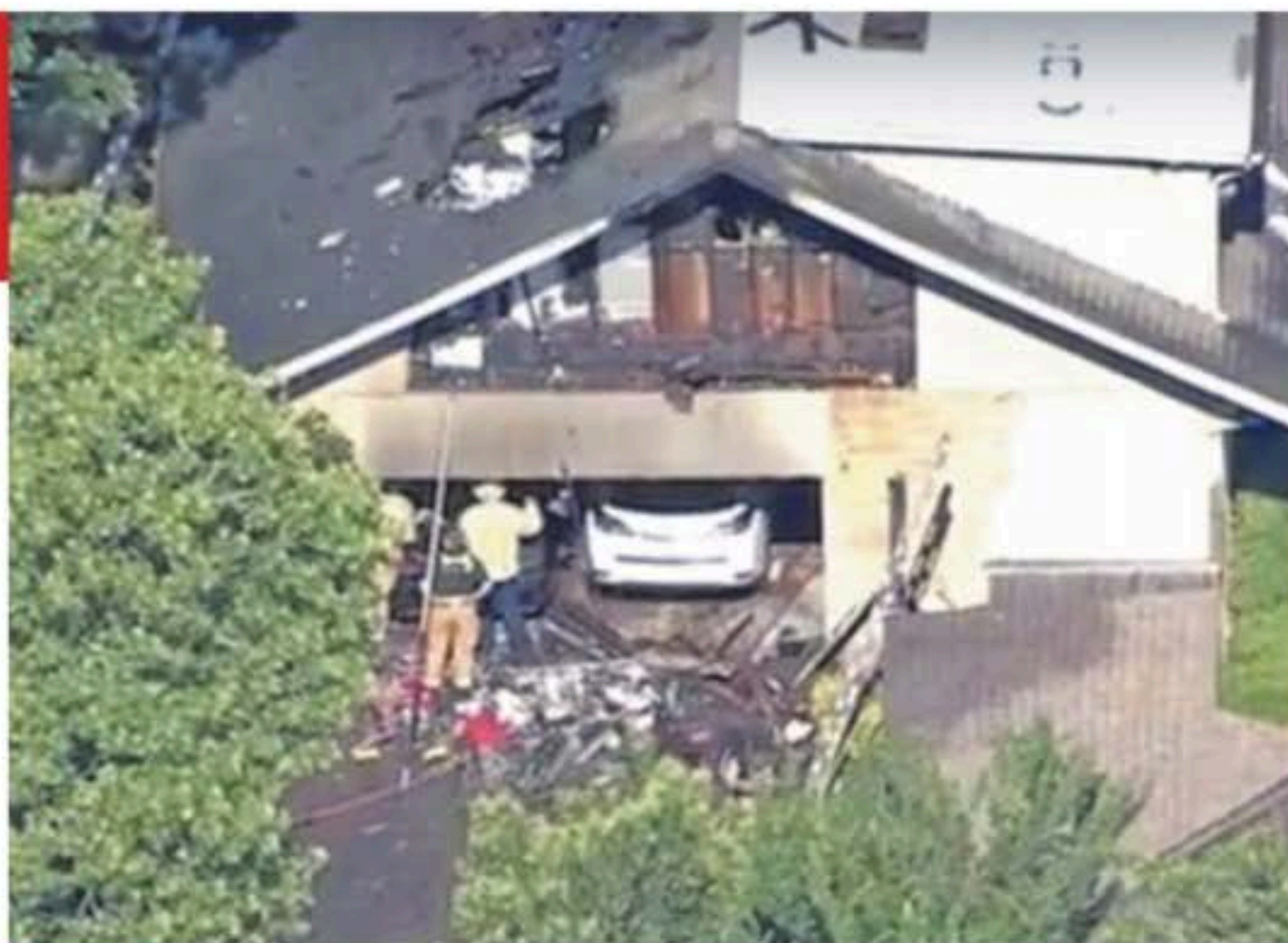
By Joshua Baethge  
PEOPLE NEWSPAPERS

More than a month after the Dallas County Medical Examiner's office concluded Preston Hollow attorney Ira Tobolowsky died from "thermal burns and smoke inhalation in association with blunt force trauma," questions remain unanswered about who would want to murder the 68-year-old.

"This is an active and ongoing investigation, and we are not releasing any details related to this matter at this point in time," Dallas Fire-Rescue Public Information Officer Jason Evans said.

Tobolowsky was found dead May 13 on the floor of his garage. Local news reports at the time quote fire officials saying the fire "seemed suspicious." Dallas police assigned a homicide investigator to the case shortly thereafter.

The man firefighters found bore little resemblance to the dashing picture of the attorney that was splashed across local media. Family members told reporters that while he was mentally fit, a chronic medical condition had left Tobolowsky unable to fully extend his arms or raise his



Dallas Fire-Rescue personnel investigate the May 13 fire at Ira Tobolowsky's home on Kenshire Lane. COURTESY CBS 11

head. Walking was said to be difficult.

Speculation has centered around Steven Aubrey and Brian Vodicka, two attorneys involved in a defamation lawsuit Tobolowsky filed in July 2015. The three lawyers had been trading verbal barbs for years.

Judge Eric Moyé found Aubrey and Vodicka in contempt of court in March for allegedly refusing multiple court orders. The two attorneys responded in April with a request for Moyé to remove himself from the case. The

judge declined to do so. However, five days after the fire, on May 18, Moyé voluntarily recused himself from the proceedings, citing "implications in the death of Mr. Tobolowsky."

In 2013 when Tobolowsky represented Aubrey's mother in a case against her son over the family estate, Tobolowsky eventually prevailed over Aubrey and his attorney, Vodicka. In his suit, Tobolowsky alleged that Aubrey and Vodicka continued to defame him

**CONTINUED ON 50**

### TIMELINE

- July 2015**  
Tobolowsky files defamation lawsuit against Aubrey and Vodicka
- March 2016**  
Judge Moyé finds Aubrey and Vodicka in contempt
- April 2016**  
Aubrey and Vodicka's motion to remove Moyé from case denied
- May 13**  
Ira Tobolowsky found dead in house fire
- May 18**  
Judge Eric Moyé removes himself from the case
- Aug 25**  
Dallas County medical examiner classifies death as homicide



### DINING

Halal Guys in the house fresh from the streets of NYC 20



### SPORTS

Hillcrest Lady Panthers reload for another season 18



### COMMUNITY

Local business supports girls' education abroad 49

### SCHOOLS

DISD trustees elect yet another president after heated debate 10

### CATTLE BARON'S

Saddle up in style with Cattle Baron's Ball preview 30

### COMMUNITY

Should Fair Park be run by a Park Cities resident? 49



# PARTNERS CARD

## Shop A Little, Help A Lot

By Britt Stafford  
PEOPLE NEWSPAPERS

Partner's Card has been encouraging women to shop with a purpose for the past 23 years. This year, the organization is empowering cardholders to "Shop like a Hero" from Oct. 28 to Nov. 7.

"As always, we want everyone to get excited about Partners Card and shopping with a fabulous discount, but we also want to remind people that they really are helping someone impacted by domestic violence," co-chair Elizabeth Dacus said. "Every card purchased is helping to shelter a victim and raise awareness about domestic violence. Our Partners Card shoppers really are heroes."

"PARTNERS CARD IS SO IMPORTANT TO WHAT WE DO. IT DOESN'T WORK WITHOUT THE PEOPLE IN THE COMMUNITY WHO ARE OUT SHOPPING WITH THE CARD."

### MELISSA SHERRILL

Partner's Card, the signature fundraiser for the Family Place, has raised more than \$16 million to help put an end to family violence in the community.

"I personally view my home as my 'safe place,'" co-chair Samantha Wortley said.



"I certainly can not imagine not only feeling unsafe in my home, but even worse, feeling threatened by those who are supposed to love and protect me the most. I don't feel that any woman, man, or children should have to feel that fear, and if they do, I want to try to help them escape that life."

The Family Place, which started in

1978, is a family violence service provider that offers services such as counseling, shelter to men, women, and children, and youth programs through the Be Project.

In May, the Family Place broke ground on Ann Moody Place, its new Central Dallas Counseling Center, which is expected to open spring 2017. The facility, which is located in an undisclosed location for the



**Above:** A rendering of the Ann Moody Place, which broke ground in an undisclosed location in May.

**Left:** The 2016 Partners Card Co-Chairs Elizabeth Dacus, Samantha Wortley, and Jane Rozelle

safety of Family Place clients, will include 13 emergency shelter bedrooms that can house up to 30 victims, a hotline and call center, play therapy rooms, a medical and dental clinic, private and group counseling rooms, and an on-site kennel for family pets.

According to Melissa Sherrill with the Family Place, the money garnered from Partners Card goes toward operating costs. She considered the fundraising effort a way to educate people about the organization and show them how they can be involved.

While Partners Card sold around 16,000 cards last year, Sherrill would like to see that number bumped up to 20,000. All three co-chairs are hoping the event will exceed its goal of \$1.2 million. For co-chair Jane Roselle, "[The] sky's the limit!"

"[Partners Card] helps us in so many ways," Sherrill said. "It's so important to what we do. It doesn't work without the people in the community who are out with the card, shopping with the card."

**Familyplace.org**  
**214.559.2170**

73 women,  
152 children &  
2 men provided  
34,240 days of  
long-term  
housing,  
education &  
training

**In 2015, the Family Place  
provided 10,729 clients with  
141,317 hours of service.  
All programs are offered in  
Spanish and English.**

Keeping  
children safe  
and helping  
them regain  
developmental  
delays  
47 children  
served

**24-Hour Crisis Hotline**  
**214.941.1991**

**COMMUNITY  
BASED  
COUNSELING**

1,561 women &  
21 men counseled  
in four locations  
throughout DFW

**SUPPORTIVE  
LIVING  
PROGRM**

**EMERGENCY  
SHELTER**  
376 women  
572 children  
25 men

**CHILD  
DEVELOPMENT  
CENTER**

170 children  
served;  
82% showed  
at least 25%  
increase in their  
age-appropriate  
development  
skills

**K-2  
LEARNING  
CENTER**

**SAFE CAMPUS  
CLINIC**  
196 women &  
children provided  
health care

**24-HOUR  
CRISIS  
HOTLINE**

10,199 hotline  
crisis calls  
18,337  
information  
referral calls



**PARTNERS CARD**


**Suit Up to Shop**

Shopping like a hero takes proper planning. What better way to make your battle plan than with a sneak peak at the many retailers supporting the Family Place through Partners Card?

- |  |                                      |
|--|--------------------------------------|
| Abi Ferrin Flagship                    | Brookstone                           |
| Accents                                | Brumley Gardens                      |
| Accessory Concierge                    | BuDhaGirl                            |
| Adeline                                | Bungalow 5                           |
| Agent Provocateur                      | Busy Body                            |
| A-K-R-I-S-                             | Cabana                               |
| alice + olivia by Stacey Bendet        | Dr. Calaway-Batky                    |
| All Vac                                | Calypso St. Barth                    |
| Allen Dean Home                        | Camille's Creations                  |
| Allen Edmonds                          | Canal Clothing                       |
| Allie-Coosh                            | Canali                               |
| American Eyewear                       | CANARY                               |
| Ana's Papeterie                        | Capel Rugs and Home                  |
| animal crackers                        | Carlyn Galerie                       |
| ANN MASHBURN                           | Carolina Herrera                     |
| Anteks Home Furnishings                | CASA de LINO                         |
| Anthropologie                          | Castle Gap Jewelry                   |
| Antique Row                            | Cebolla Fine Flowers                 |
| Apex by Sunglass Hut                   | CH Carolina Herrera                  |
| Apples to Zinnias, The Gifted Florist  | Chocolate Secrets                    |
| Arhaus                                 | Christy Drew Designs, Inc.           |
| Art of Old India                       | Christy M Boutique                   |
| Arteriors                              | Circa 2000 Fine Apparel              |
| Arteriors Too Outlet                   | Clarks                               |
| Avalon Salon and Spa                   | Coco & Dash                          |
| Aveda Experience Center                | Cole Haan                            |
| Avior Jewelry                          | Collectors Covey                     |
| babybliss                              | The Container Store                  |
| Bachendorf's                           | The Coop at Cooper Fitness Center    |
| BAG n' BAGGAGE                         | Cooper Spa Dallas                    |
| Ballard & Blakely                      | Copper Lamp Fine Silver & China      |
| bareMinerals                           | Cotton Hearts                        |
| Barklee LTD.                           | Cotton Island                        |
| Bask Boutique                          | The Cozy Cottage Children's Boutique |
| Beading Dreams                         | Crate and Barrel                     |
| Beaucoup                               | Creative Stitches and Gifts          |
| Beautystudio Blo Bar                   | Culinary Connection                  |
| Bella & Chloe/Brethren                 | Culwell & Son                        |
| Bella MD Laser Vein & Aesthetic Center | Curated by Kristin Mullen            |
| Bellacures                             | Cynthia Elliot Boutique              |
| Beretta Gallery Dallas                 | Dallas Arboretum                     |
| Bernadette Schaeffler                  | Dallas Fine Wine & Spirits Shoppe    |
| Betty Lou Boutique                     | Dallas Yoga Center                   |
| Betty Reiter                           | David Yurman                         |
| Beyond Baroque                         | dear hannah,                         |
| BEYOND Pilates                         | Del Frisco's Grille                  |
| BEYOND500                              | Diamond Luxury Healthcare            |
| Big Mango Trading Co.                  | diptyque                             |
| Billy Reid                             | DLM Supply                           |
| Bittano                                | Doodle & Stinker Children's Boutique |
| Black Optical                          | Double R                             |
| Blue Mesa Grill                        | Dougherty's Pharmacy                 |
| Blue Print                             | Dr Delphinium Designs + Events       |
| the blues JEAN BAR                     | Dr Delphinium Flower + Orchid House  |
| Blush Aesthetics and Wellness          | Drapes Decor Antiques & More         |
| BoConcept                              | Drybar                               |
| Bodacious Boutique                     | E. Leigh's Boutique                  |
| bodybar fitness                        | Eileen Fisher                        |
| Bonobos                                | Elaine Turner                        |
| Bookshop of Saint Michael              | Elements                             |
| BOSS                                   | Elie Tahari                          |
| Bottega Veneta                         | Ellis Hill                           |
| Bradbury Lane                          | The Enchanted Galleries              |
| Brahmin                                | Enlighten MD                         |
| Brighton Collectibles                  | Epic Apparel                         |
| Brooklyn + West                        | Ermenezegildo Zegna                  |
| Brooks Brothers                        | The Exercise Coach                   |
|  | Fabricadabra                         |

All That's Fall!


SHOP FALL AND HOLIDAY



**ST. MICHAEL'S WOMAN'S EXCHANGE**  
5 HIGHLAND PARK VILLAGE  
214-521-3862

**PARTNERS CARD HOURS**  
SUN 1PM - 5PM AND MON - SAT 9:30AM - 5:00PM

85% HIGHLAND PARK VILLAGE  
AVANTGARDEN.COM  
214-559-3434



**AVANT Garden**

**SAVE 20% WITH YOUR PARTNER'S CARD**  
OCTOBER 28 - NOVEMBER 6, 2016

Daphne Artlich Photography